

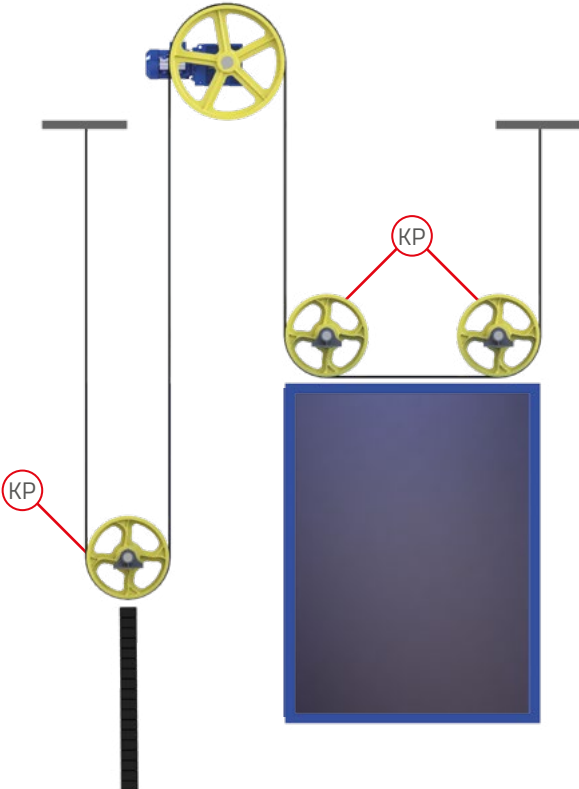
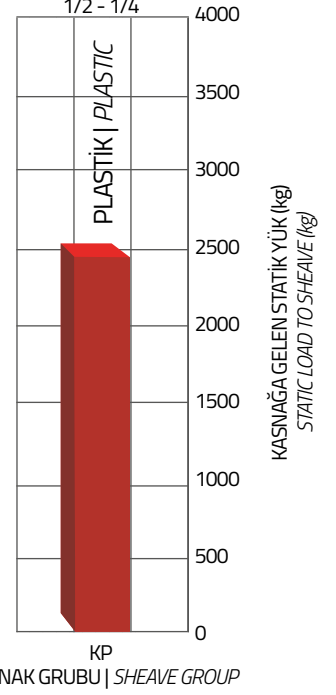
PLASTİK KASNAKLARI PLASTIC SHEAVES

KP SERİSİ
KP SERIES



PLASTİK GÖVDE | PLASTIC BODY
Ø120mm - Ø640mm Arası | Between

ASKI TİPİ | ROPING TYPE



- Malzemesi Polyamid 6 dir.
The material is Polyamid 6.

- Kasnağa gelen yük, aşağıdaki formülden kolayca hesaplanabilir.
($F=2xF_1 \sin(A/2)$ F1-halat yükü (kg), A-sarma açısı)
The load on the pulley can be easily calculated from the following formula.
($F=2xF_1 \sin(A/2)$ F1-rope load (kg), A-winding angle)

Mil hesaplamaları, asansörün tasarım ofisi tarafından yapılmalıdır, bu hesaplamalarda milin boyu mümkün olduğunca kısa olmasına dikkat edilmelidir.

- Axle calculations should be made by the design office of the elevator, in these calculations, the length of the axle should be as short as possible.

Hazır mil ölçülerimizi kataloğumuzda bulabilirsiniz. Sabit ve kayar tip millerimiz mevcuttur.
You can find our ready axle dimensions in our catalogue. We have fixed and sliding type axles.

- Rulmanlarımız yaklaşık 10.000 saat çalışma ömrüne göre hesap edilmiştir. Daha fazla çalışma saati istenirse, bu ayrıca belirtilmelidir.
Our bearings are calculated according to the working life of approximately 10,000 hours. If further working hours are requested, this must be specified separately.

- Montaj esnasında halatların sarım yönlerine (sağ sarım – sol sarım) eşit sayıda olması kasnakların ömrü ve halat sesinin azaltılması açısından önemlidir.
During the assembly, the ropes should be equal to the winding directions (right winding - left winding) and this is important for the life of the pulleys and the reduction of the rope noise.

Kasnaklarımızda balans mevcuttur. 1.6 m/s ve üstü kabin hızlarında balans yapılması önemlidir.

Balance is available in our pulleys. Balancing at car speeds of 1.6 m/s and above is important.

Kataloğumuzdan sayfa 94'den itibaren bulabilirsiniz
Please check page 94 from our catalogue



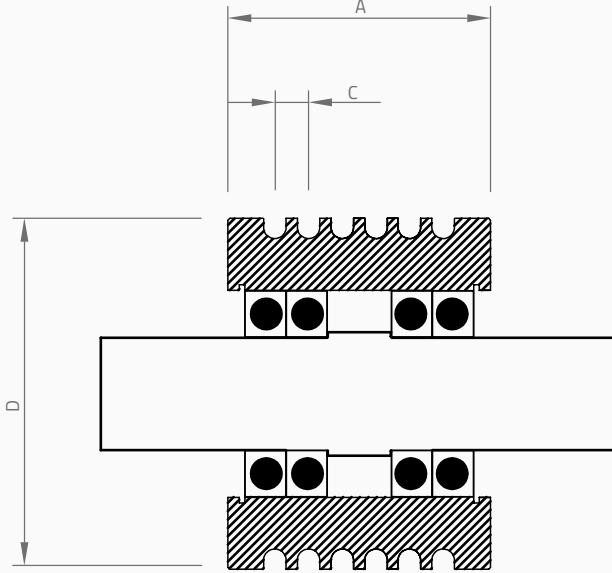
KP SERİSİ
KP SERIES

PLASTİK KASNAKLARI
PLASTIC SHEAVES

KP SERİSİ
KP SERIES

1:1 - 1:2 - 1:4 ASKI
1:1 - 1:2 - 1:4 ROPING

SABİT MİL
FIXED AXLE



Ø120 mm

MİL BOYU | AXLE LENGTH

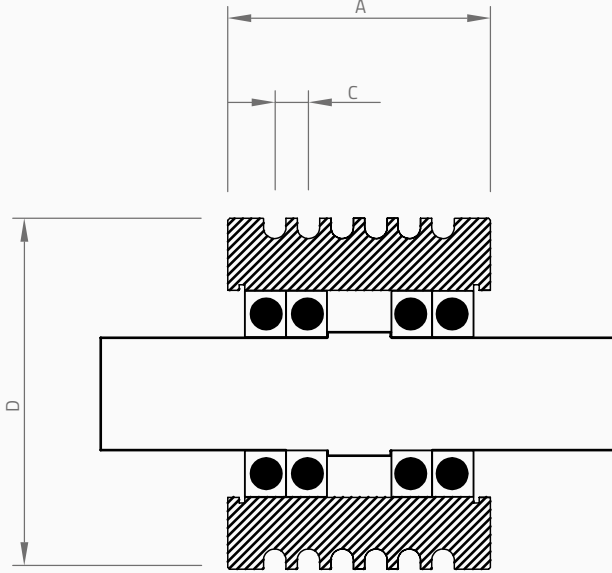
300 mm

KASNAK ÇAPI NOMİNAL DIAMETER (Ø mm)	KANAL SAYISI NUMBER OF GROOVES	HALAT ÇAPI ROPE DIAMETER (Ø mm)	HALAT MERKEZİ DISTANCE BETWEEN ROPES (mm)	GENİŞLİK CROWN WIDTH (mm)	RULMAN BALL BEARING	MİL ÇAPI AXLE DIAMETER (Ø mm)	STATİK YÜK STATIC LOAD (kg)	ÜRÜN KODU PRODUCT CODE	AĞIRLIK WEIGHT (INCLUDE PILLOW/BLOCKS) (kg)
D			C	A					
120	4	6,5	11	110	4x6210 ZZ	50	850	KP124-6,5	14
120	5	6,5	11	110	4x6210 ZZ	50	1050	KP125-6,5	14
120	6	6,5	11	110	4x6210 ZZ	50	1260	KP126-6,5	14
120	7	6,5	11	110	4x6210 ZZ	50	1470	KP127-6,5	14
120	8	6,5	11	110	4x6210 ZZ	50	1680	KP128-6,5	14
120	9	6,5	11	140	4x6210 ZZ	50	1680	KP129-6,5	15
120	10	6,5	11	140	4x6210 ZZ	50	1680	KP1210-6,5	15
120	11	6,5	11	140	4x6210 ZZ	50	1680	KP1211-6,5	15

KP SERİSİ
KP SERIES

1:1 - 1:2 - 1:4 ASKI
1:1 - 1:2 - 1:4 ROPING

SABİT MİL
FIXED AXLE



Ø140 mm

MİL BOYU | AXLE LENGHT

300 mm

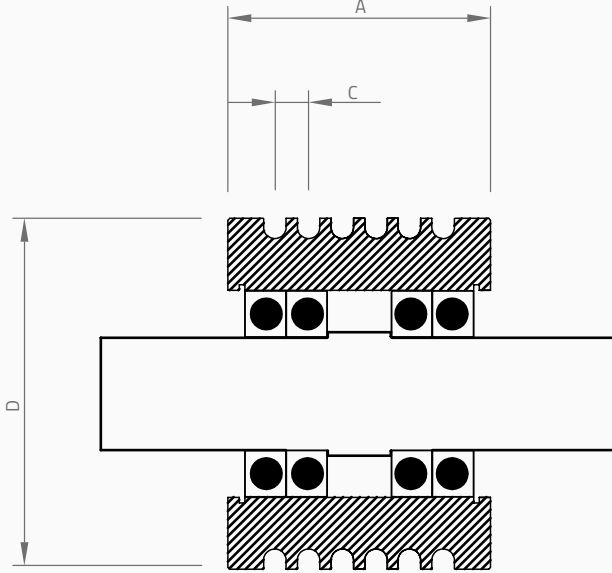
KASNAK ÇAPI NOMİNAL DIAMETER (Ø mm)	KANAL SAYISI NUMBER OF GROOVES	HALAT ÇAPI ROPE DIAMETER (Ø mm)	HALAT MERKEZİ DISTANCE BETWEEN ROPES (mm)	GENİŞLİK CROWN WIDTH (mm)	RULMAN BALL BEARING	MİL ÇAPI AXLE DIAMETER (Ø mm)	STATİK YÜK STATIC LOAD (kg)	ÜRÜN KODU PRODUCT CODE	AĞIRLIK WEIGHT (INCLUDE PILLOW BLOCKS) (kg)
D			C	A					
140	4	6,5	11	110	4x6210 ZZ	50	850	KP144-6,5	14
140	5	6,5	11	110	4x6210 ZZ	50	1050	KP145-6,5	14
140	6	6,5	11	110	4x6210 ZZ	50	1260	KP146-6,5	14
140	7	6,5	11	110	4x6210 ZZ	50	1470	KP147-6,5	14
140	8	6,5	11	110	4x6210 ZZ	50	1680	KP148-6,5	14
140	9	6,5	11	140	4x6210 ZZ	50	1680	KP149-6,5	15
140	10	6,5	11	140	4x6210 ZZ	50	1680	KP1410-6,5	15
140	11	6,5	11	140	4x6210 ZZ	50	1680	KP1411-6,5	15

KP SERİSİ
KP SERIES

KP SERİSİ
KP SERIES

1:1 - 1:2 - 1:4 ASKI
1:1 - 1:2 - 1:4 ROPING

SABİT MİL
FIXED AXLE



Ø160 mm

MİL BOYU | AXLE LENGTH

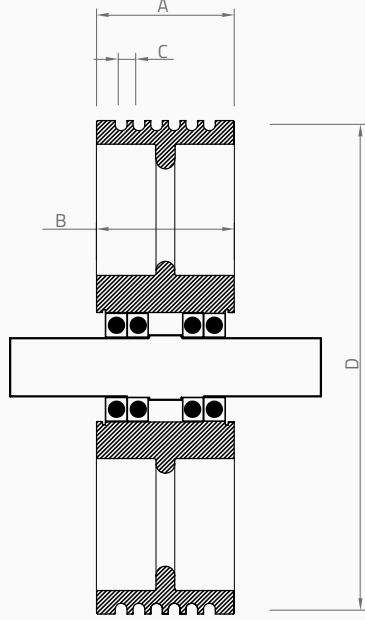
300 mm

KASNAK ÇAPI NOMINAL DIAMETER (Ø mm)	KANAL SAYISI NUMBER OF GROOVES	HALAT ÇAPI ROPE DIAMETER (Ø mm)	HALAT MERKEZİ DISTANCE BETWEEN ROPES (mm)	GENİŞLİK CROWN WIDTH (mm)	RULMAN BALL BEARING	MİL ÇAPI AXLE DIAMETER (Ø mm)	STATİK YÜK STATIC LOAD (kg)	ÜRÜN KODU PRODUCT CODE	AĞIRLIK WEIGHT (INCLUDE PILLOW BLOCKS) (kg)
D			C	A					
160	4	6,5	11	110	4x6210 ZZ	50	850	KP164-6,5	16
160	5	6,5	11	110	4x6210 ZZ	50	1050	KP165-6,5	16
160	6	6,5	11	110	4x6210 ZZ	50	1260	KP166-6,5	16
160	7	6,5	11	110	4x6210 ZZ	50	1470	KP167-6,5	16
160	8	6,5	11	110	4x6210 ZZ	50	1680	KP168-6,5	16
160	9	6,5	11	140	4x6210 ZZ	50	1680	KP169-6,5	16
160	10	6,5	11	140	4x6210 ZZ	50	1680	KP1610-6,5	16
160	11	6,5	11	140	4x6210 ZZ	50	1680	KP1611-6,5	16

KP SERİSİ KP SERIES

1:1 - 1:2 - 1:4 ASKI
1:1 - 1:2 - 1:4 ROPING

SABİT MİL
FIXED AXLE



Ø210 mm

MİL BOYU | AXLE LENGTH

300 mm

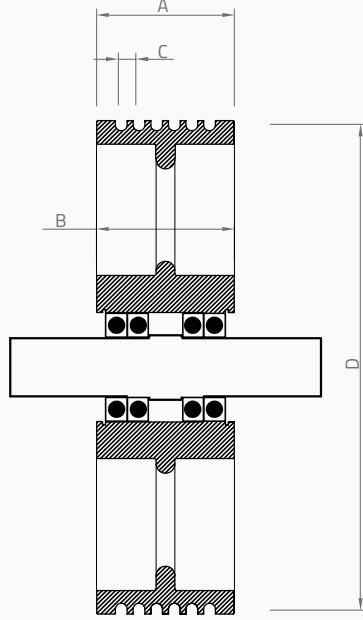
KASNAK ÇAP NOMINAL DIAMETER (Ø mm)	KANAL SAYISI NUMBER OF GROOVES	HALAT ÇAP ROPE DIAMETER (Ø mm)	HALAT MERKEZİ DISTANCE BETWEEN ROPES (mm)	GENİŞLİK CROWN WIDTH (mm)	GÖBEK GENİŞLİK HUB WIDTH (mm)	GÖBEK DİŞ ÇAP HUB OUTSIDE DIAMETER (Ø mm)	RULMAN BALL BEARING	MİL ÇAP AXLE DIAMETER (Ø mm)	STATİK YÜK STATIC LOAD (kg)	ÜRÜN KODU PRODUCT CODE	AĞIRLIK WEIGHT (INCLUDE PILLOW BLOCKS) (kg)
D			C	A	B	E					
210	4	6,5	11	106	106	160	4x6210 ZZ	50	850	KP214-6,5	20
210	5	6,5	11	106	106	160	4x6210 ZZ	50	1050	KP215-6,5	20
210	6	6,5	11	106	106	160	4x6210 ZZ	50	1260	KP216-6,5	20
210	7	6,5	11	106	106	160	4x6210 ZZ	50	1470	KP217-6,5	20
210	8	6,5	11	106	106	160	4x6210 ZZ	50	1680	KP218-6,5	20
210	9	6,5	11	126	126	160	4x6210 ZZ	50	1680	KP219-6,5	21
210	10	6,5	11	126	126	160	4x6210 ZZ	50	1680	KP2110-6,5	21
210	11	6,5	11	156	156	160	4x6210 ZZ	50	1680	KP2111-6,5	22
210	12	6,5	11	156	156	160	4x6210 ZZ	50	1680	KP2112-6,5	22
210	4	8	13	106	106	160	4x6210 ZZ	50	850	KP214-8	20
210	5	8	13	106	106	160	4x6210 ZZ	50	1050	KP215-8	20
210	6	8	13	106	106	160	4x6210 ZZ	50	1260	KP216-8	20
210	7	8	13	106	106	160	4x6210 ZZ	50	1470	KP217-8	20
210	8	8	13	126	126	160	4x6210 ZZ	50	1680	KP218-8	21
210	9	8	13	156	156	160	4x6210 ZZ	50	1680	KP219-8	22
210	10	8	13	156	156	160	4x6210 ZZ	50	1680	KP2110-8	22
210	4	10	17	106	106	160	4x6210 ZZ	50	850	KP214-10	20
210	5	10	17	106	106	160	4x6210 ZZ	50	1050	KP215-10	20
210	6	10	17	126	126	160	4x6210 ZZ	50	1260	KP216-10	21
210	7	10	17	156	156	160	4x6210 ZZ	50	1470	KP217-10	22
210	8	10	17	156	156	160	4x6210 ZZ	50	1680	KP218-10	22

KP SERİSİ
KP SERIES

KP SERİSİ KP SERIES

1:1 - 1:2 - 1:4 ASKI
1:1 - 1:2 - 1:4 ROPING

SABİT MİL FIXED AXLE



Ø240 mm

MİL BOYU | AXLE LENGTH

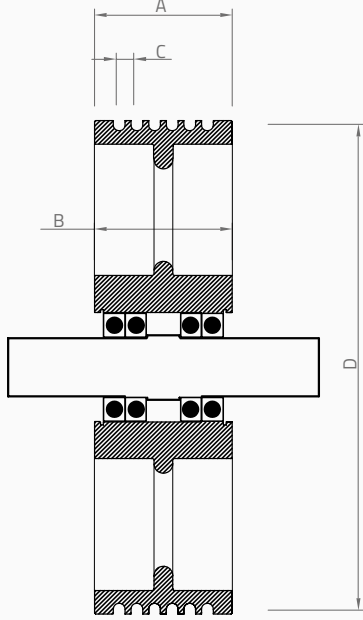
300 mm

KASNAK ÇAP NOMINAL DIAMETER (Ø mm)	KANAL SAYISI NUMBER OF GROOVES	HALAT ÇAP ROPE DIAMETER (Ø mm)	HALAT MERKEZİ DISTANCE BETWEEN ROPES (mm)	GENİSLİK CROWN WIDTH (mm)	GÖBEK GENİSLİK HUB WIDTH (mm)	GÖBEK DIŞ ÇAP HUB OUTSIDE DIAMETER (Ø mm)	RULMAN BALL BEARING	MİL ÇAP AXLE DIAMETER (Ø mm)	STATİK YÜK STATIC LOAD (kg)	ÜRÜN KODU PRODUCT CODE	AĞIRLIK WEIGHT (INCLUDE PILLOW BLOCKS) (kg)
D			C	A	B	E					
240	4	6,5	11	106	106	160	4x6210 ZZ	50	850	KP214-6,5	22
240	5	6,5	11	106	106	160	4x6210 ZZ	50	1050	KP215-6,5	22
240	6	6,5	11	106	106	160	4x6210 ZZ	50	1260	KP216-6,5	22
240	7	6,5	11	106	106	160	4x6210 ZZ	50	1470	KP217-6,5	22
240	8	6,5	11	106	106	160	4x6210 ZZ	50	1680	KP218-6,5	22
240	9	6,5	11	126	126	160	4x6210 ZZ	50	1680	KP219-6,5	23
240	10	6,5	11	126	126	160	4x6210 ZZ	50	1680	KP2110-6,5	23
240	11	6,5	11	156	156	160	4x6210 ZZ	50	1680	KP2111-6,5	24
240	12	6,5	11	156	156	160	4x6210 ZZ	50	1680	KP2112-6,5	24
240	4	8	13	106	106	160	4x6210 ZZ	50	1480	KP214-8	22
240	5	8	13	106	106	160	4x6210 ZZ	50	1850	KP215-8	22
240	6	8	13	106	106	160	4x6210 ZZ	50	1850	KP216-8	22
240	7	8	13	106	106	160	4x6210 ZZ	50	1850	KP217-8	22
240	8	8	13	126	126	160	4x6210 ZZ	50	1850	KP218-8	23
240	9	8	13	156	156	160	4x6210 ZZ	50	1850	KP219-8	24
240	10	8	13	156	156	160	4x6210 ZZ	50	1850	KP2110-8	24
240	4	10	17	106	106	160	4x6210 ZZ	50	1850	KP214-8	22
240	5	10	17	106	106	160	4x6210 ZZ	50	1850	KP215-8	22
240	6	10	17	126	126	160	4x6210 ZZ	50	1850	KP216-8	23
240	7	10	17	156	156	160	4x6210 ZZ	50	1850	KP217-8	24
240	8	10	17	156	156	160	4x6210 ZZ	50	1850	KP218-8	24

KP SERİSİ KP SERIES

1:1 - 1:2 - 1:4 ASKI
1:1 - 1:2 - 1:4 ROPING

SABİT MİL
FIXED AXLE



Ø320 mm

MİL BOYU | AXLE LENGTH

300 mm

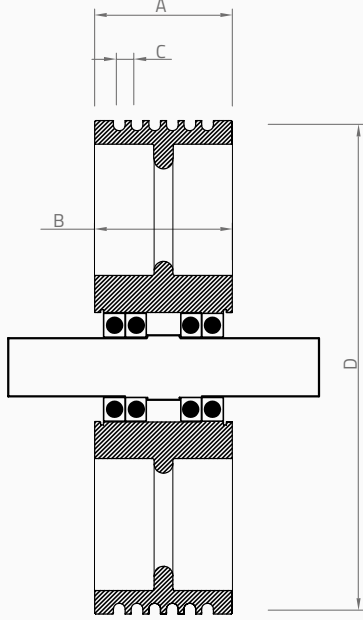
KASNAK ÇAP NOMINAL DIAMETER (Ø mm)	KANAL SAYISI NUMBER OF GROOVES	HALAT ÇAP ROPE DIAMETER (Ø mm)	HALAT MERKEZİ DISTANCE BETWEEN ROPES (mm)	GENİŞLİK CROWN WIDTH (mm)	GÖBEK GENİŞLİK HUB WIDTH (mm)	GÖBEK DIŞ ÇAP HUB OUTSIDE DIAMETER (Ø mm)	RULMAN BALL BEARING	MİL ÇAP AXLE DIAMETER (Ø mm)	STATİK YÜK STATIC LOAD (kg)	ÜRÜN KODU PRODUCT CODE	AĞIRLIK WEIGHT (INCLUDE PILLOW BLOCKS) (kg)
D			C	A	B	E					
320	4	6,5	11	125	125	160	4x6210 ZZ	50	850	KP324-6,5	23
320	5	6,5	11	125	125	160	4x6210 ZZ	50	1050	KP325-6,5	23
320	6	6,5	11	125	125	160	4x6210 ZZ	50	1260	KP326-6,5	23
320	7	6,5	11	125	125	160	4x6210 ZZ	50	1470	KP327-6,5	23
320	8	6,5	11	125	125	160	4x6210 ZZ	50	1680	KP328-6,5	23
320	9	6,5	11	125	125	160	4x6210 ZZ	50	1680	KP329-6,5	23
320	10	6,5	11	140	140	160	4x6210 ZZ	50	1680	KP3210-6,5	23
320	11	6,5	11	140	140	160	4x6210 ZZ	50	1680	KP3211-6,5	25
320	4	8	13	125	125	160	4x6210 ZZ	50	1480	KP324-8	23
320	5	8	13	125	125	160	4x6210 ZZ	50	1850	KP325-8	23
320	6	8	13	125	125	160	4x6210 ZZ	50	1850	KP326-8	23
320	7	8	13	125	125	160	4x6210 ZZ	50	1850	KP327-8	23
320	8	8	13	125	125	160	4x6210 ZZ	50	1850	KP328-8	23
320	9	8	13	140	140	160	4x6210 ZZ	50	1850	KP329-8	23
320	4	10	17	125	125	160	4x6210 ZZ	50	1850	KP324-10	23
320	5	10	17	125	125	160	4x6210 ZZ	50	1850	KP325-10	23
320	6	10	17	125	125	160	4x6210 ZZ	50	1850	KP326-10	23
320	7	10	17	140	140	160	4x6210 ZZ	50	1850	KP327-10	25

KP SERİSİ
KP SERIES

KP SERİSİ
KP SERIES

1:1 - 1:2 - 1:4 ASKI
1:1 - 1:2 - 1:4 ROPING

SABİT MİL
FIXED AXLE



Ø360 mm

MİL BOYU | AXLE LENGTH

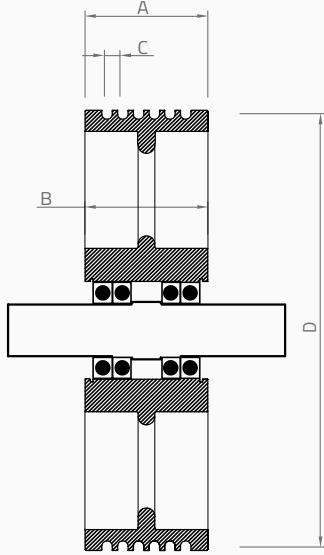
300 mm

KASNAK ÇAPI NOMINAL DIAMETER (Ø mm)	KANAL SAYISI NUMBER OF GROOVES	HALAT ÇAPI ROPE DIAMETER (Ø mm)	HALAT MERKEZİ DISTANCE BETWEEN ROPES (mm)	GENİSLİK CROWN WIDTH (mm)	GÖBEK GENİSLİK HUB WIDTH (mm)	GÖBEK DIŞ ÇAP HUB OUTSIDE DIAMETER (Ø mm)	RULMAN BALL BEARING	MİL ÇAPI AXLE DIAMETER (Ø mm)	STATİK YÜK STATIC LOAD (kg)	ÜRÜN KODU PRODUCT CODE	AĞIRLIK WEIGHT (INCLUDE PILLOW BLOCKS) (kg)
D			C	A	B	E					
360	4	6,5	11	125	125	160	4x6210 ZZ	50	850	KP364-6,5	26
360	5	6,5	11	125	125	160	4x6210 ZZ	50	1050	KP365-6,5	26
360	6	6,5	11	125	125	160	4x6210 ZZ	50	1260	KP366-6,5	26
360	7	6,5	11	125	125	160	4x6210 ZZ	50	1470	KP367-6,5	26
360	8	6,5	11	125	125	160	4x6210 ZZ	50	1680	KP368-6,5	26
360	4	8	13	125	125	160	4x6210 ZZ	50	1480	KP364-8	26
360	5	8	13	125	125	160	4x6210 ZZ	50	1850	KP365-8	26
360	6	8	13	125	125	160	4x6210 ZZ	50	1850	KP366-8	26
360	7	8	13	125	125	160	4x6210 ZZ	50	1850	KP367-8	26
360	4	10	17	125	125	160	4x6210 ZZ	50	1850	KP364-10	26
360	5	10	17	125	125	160	4x6210 ZZ	50	1850	KP365-10	26

KP SERİSİ KP SERIES

1:1 - 1:2 - 1:4 ASKI
1:1 - 1:2 - 1:4 ROPING

SABİT MİL FIXED AXLE



Ø400 mm

MİL BOYU | AXLE LENGHT

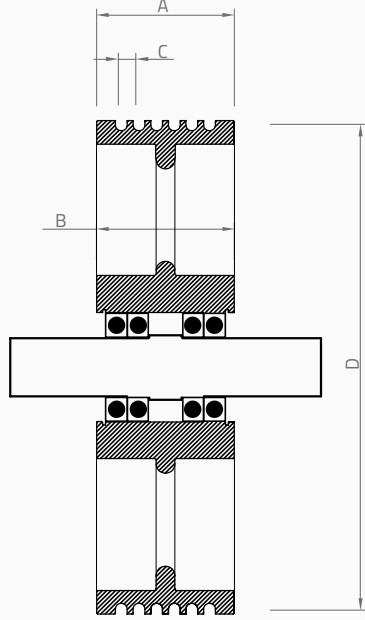
300 mm

KASNAK ÇAP NOMİNAL DIAMETER (Ø mm)	KANAL SAYISI NUMBER OF GROOVES	HALAT ÇAP ROPE DIAMETER (Ø mm)	HALAT MERKEZİ DISTANCE BETWEEN ROPES (mm)	GENİŞLİK CROWN WIDTH (mm)	GÖBEK GENİŞLİK HUB WIDTH (mm)	GÖBEK DIŞ ÇAP HUB OUTSIDE DIAMETER (Ø mm)	RULMAN BALL BEARING	MİL ÇAP AXLE DIAMETER (Ø mm)	STATİK YÜK STATIC LOAD (kg)	ÜRÜN KODU PRODUCT CODE	AĞIRLIK WEIGHT (INCLUDE PILLOW BLOCKS) (kg)
D			C	A	B	E					
400	4	6,5	11	126	126	160	4x6210 ZZ	50	850	KP404-6,5	29
400	5	6,5	11	126	126	160	4x6210 ZZ	50	1050	KP405-6,5	29
400	6	6,5	11	126	126	160	4x6210 ZZ	50	1260	KP406-6,5	29
400	7	6,5	11	126	126	160	4x6210 ZZ	50	1470	KP407-6,5	29
400	8	6,5	11	126	126	160	4x6210 ZZ	50	1680	KP408-6,5	29
400	9	6,5	11	126	126	160	4x6210 ZZ	50	1680	KP409-6,5	29
400	10	6,5	11	126	126	160	4x6210 ZZ	50	1680	KP4010-6,5	29
400	11	6,5	11	158	158	160	4x6210 ZZ	50	1680	KP4011-6,5	30
400	12	6,5	11	158	158	160	4x6210 ZZ	50	1680	KP4012-6,5	30
400	4	8	13	126	126	160	4x6210 ZZ	50	1480	KP404-8	29
400	5	8	13	126	126	160	4x6210 ZZ	50	1850	KP405-8	29
400	6	8	13	126	126	160	4x6210 ZZ	50	1850	KP406-8	29
400	7	8	13	126	126	160	4x6210 ZZ	50	1850	KP407-8	29
400	8	8	13	126	126	160	4x6210 ZZ	50	1850	KP408-8	29
400	9	8	13	158	158	160	4x6210 ZZ	50	1850	KP409-8	30
400	10	8	13	158	158	160	4x6210 ZZ	50	1850	KP4010-8	30
400	4	10	17	126	126	160	4x6210 ZZ	50	1850	KP404-10	29
400	5	10	17	126	126	160	4x6210 ZZ	50	1850	KP405-10	29
400	6	10	17	126	126	160	4x6210 ZZ	50	1850	KP406-10	29
400	7	10	17	158	158	160	4x6210 ZZ	50	1850	KP407-10	30
400	8	10	17	158	158	160	4x6210 ZZ	50	1850	KP408-10	30
400	4	12	19	126	126	160	4x6210 ZZ	50	1850	KP404-12	29
400	5	12	19	126	126	160	4x6210 ZZ	50	1850	KP405-12	29
400	6	12	19	158	158	160	4x6210 ZZ	50	1850	KP406-12	30
400	7	12	19	158	158	160	4x6210 ZZ	50	1850	KP407-12	30
400	8	12	19	158	158	160	4x6210 ZZ	50	1850	KP408-12	30

KP SERİSİ
KP SERIES

1:1 - 1:2 - 1:4 ASKI
1:1 - 1:2 - 1:4 ROPING

SABİT MİL
FIXED AXLE



Ø450 mm

MİL BOYU | AXLE LENGTH

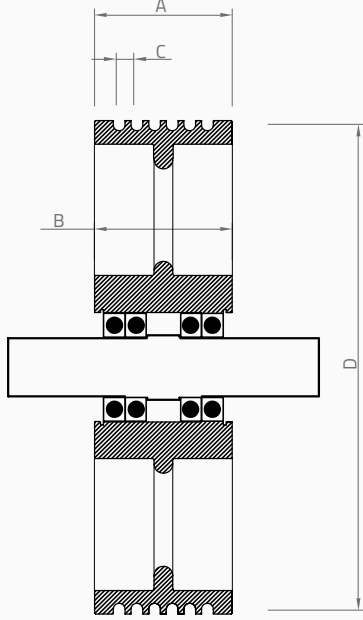
300 mm

KASNAK ÇAPI NOMINAL DIAMETER (Ø mm)	KANAL SAYISI NUMBER OF GROOVES	HALAT ÇAPI ROPE DIAMETER (Ø mm)	HALAT MERKEZİ DISTANCE BETWEEN ROPES (mm)	GENİSLİK CROWN WIDTH (mm)	GÖBEK GENİSLİK HUB WIDTH (mm)	GÖBEK DIŞ ÇAP HUB OUTSIDE DIAMETER (Ø mm)	RULMAN BALL BEARING	MİL ÇAPI AXLE DIAMETER (Ø mm)	STATİK YÜK STATIC LOAD (kg)	ÜRÜN KODU PRODUCT CODE	AĞIRLIK WEIGHT (INCLUDE PILLOW BLOCKS) (kg)
D			C	A	B	E					
450	4	6,5	11	110	110	160	4x6210 ZZ	50	850	KP454-6,5	29
450	5	6,5	11	110	110	160	4x6210 ZZ	50	1050	KP455-6,5	29
450	6	6,5	11	110	110	160	4x6210 ZZ	50	1260	KP456-6,5	29
450	7	6,5	11	110	110	160	4x6210 ZZ	50	1470	KP457-6,5	29
450	8	6,5	11	110	110	160	4x6210 ZZ	50	1680	KP458-6,5	29
450	4	8	13	110	110	160	4x6210 ZZ	50	1480	KP454-8	29
450	5	8	13	110	110	160	4x6210 ZZ	50	1850	KP455-8	29
450	6	8	13	110	110	160	4x6210 ZZ	50	1850	KP456-8	29
450	7	8	13	110	110	160	4x6210 ZZ	50	1850	KP457-8	29
450	4	10	17	110	110	160	4x6210 ZZ	50	1850	KP454-10	29
450	5	10	17	110	110	160	4x6210 ZZ	50	1850	KP455-10	29
450	4	12	19	110	110	160	4x6210 ZZ	50	1850	KP454-12	29
450	5	12	19	110	110	160	4x6210 ZZ	50	1850	KP455-12	29

KP SERİSİ KP SERIES

1:1 - 1:2 - 1:4 ASKI
1:1 - 1:2 - 1:4 ROPING

SABİT MİL FIXED AXLE



Ø480 mm

MİL BOYU | AXLE LENGTH

300 mm

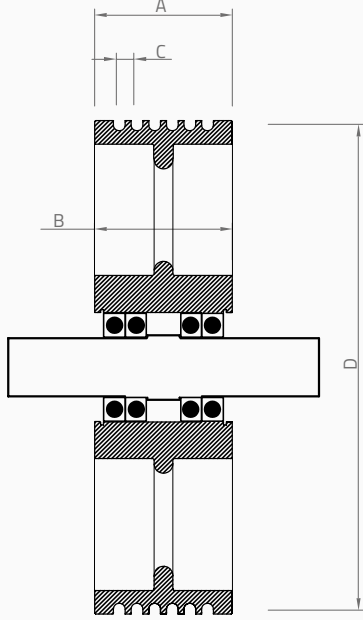
KASNAK ÇAP NOMINAL DIAMETER (Ø mm)	KANAL SAYISI NUMBER OF GROOVES	HALAT ÇAP ROPE DIAMETER (Ø mm)	HALAT MERKEZİ DISTANCE BETWEEN ROPES (mm)	GENİŞLİK CROWN WIDTH (mm)	GÖBEK GENİŞLİK HUB WIDTH (mm)	GÖBEK DIŞ ÇAP HUB OUTSIDE DIAMETER (Ø mm)	RULMAN BALL BEARING	MİL ÇAP AXLE DIAMETER (Ø mm)	STATİK YÜK STATIC LOAD (kg)	ÜRÜN KODU PRODUCT CODE	AĞIRLIK WEIGHT (INCLUDE PILLOW BLOCKS) (kg)
D			C	A	B	E					
480	4	6,5	11	115	115	160	4x6210 ZZ	50	850	KP484-6,5	29
480	5	6,5	11	115	115	160	4x6210 ZZ	50	1050	KP485-6,5	29
480	6	6,5	11	115	115	160	4x6210 ZZ	50	1260	KP486-6,5	29
480	7	6,5	11	115	115	160	4x6210 ZZ	50	1470	KP487-6,5	29
480	8	6,5	11	115	115	160	4x6210 ZZ	50	1680	KP488-6,5	29
480	4	8	13	115	115	160	4x6210 ZZ	50	1480	KP484-8	29
480	5	8	13	115	115	160	4x6210 ZZ	50	1850	KP485-8	29
480	6	8	13	115	115	160	4x6210 ZZ	50	1850	KP486-8	29
480	7	8	13	115	115	160	4x6210 ZZ	50	1850	KP487-8	29
480	4	10	17	115	115	160	4x6210 ZZ	50	1850	KP484-10	29
480	5	10	17	115	115	160	4x6210 ZZ	50	1850	KP485-10	29
480	4	12	19	115	115	160	4x6210 ZZ	50	1850	KP484-12	29
480	5	12	19	115	115	160	4x6210 ZZ	50	1850	KP485-12	29

KP SERİSİ
KP SERIES

KP SERİSİ
KP SERIES

1:1 - 1:2 - 1:4 ASKI
1:1 - 1:2 - 1:4 ROPING

SABİT MİL
FIXED AXLE



Ø500 mm

MİL BOYU | AXLE LENGTH

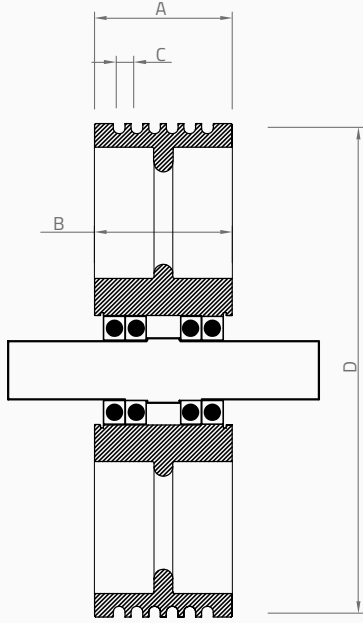
300 mm

KASNAK ÇAP NOMINAL DIAMETER (Ø mm)	KANAL SAYISI NUMBER OF GROOVES	HALAT ÇAP ROPE DIAMETER (Ø mm)	HALAT MERKEZİ DISTANCE BETWEEN ROPES (mm)	GENİŞLİK CROWN WIDTH (mm)	GÖBEK GENİŞLİK HUB WIDTH (mm)	GÖBEK DIŞ ÇAP HUB OUTSIDE DIAMETER (Ø mm)	RULMAN BALL BEARING	MİL ÇAP AXLE DIAMETER (Ø mm)	STATİK YÜK STATIC LOAD (kg)	ÜRÜN KODU PRODUCT CODE	AĞIRLIK WEIGHT (INCLUDE PILLOW BLOCKS) (kg)
D			C	A	B	E					
500	4	8	13	118	118	160	4x6210 ZZ	50	1480	KP504-8	32
500	5	8	13	118	118	160	4x6210 ZZ	50	1850	KP505-8	32
500	6	8	13	118	118	160	4x6210 ZZ	50	1850	KP506-8	32
500	7	8	13	118	118	160	4x6210 ZZ	50	1850	KP507-8	32
500	4	10	17	118	118	160	4x6210 ZZ	50	1850	KP504-10	32
500	5	10	17	118	118	160	4x6210 ZZ	50	1850	KP505-10	32
500	4	12	19	118	118	160	4x6210 ZZ	50	1850	KP504-12	32
500	5	12	19	118	118	160	4x6210 ZZ	50	1850	KP505-12	32

KP SERİSİ
KP SERIES

1:1 - 1:2 - 1:4 ASKI
1:1 - 1:2 - 1:4 ROPING

SABİT MİL
FIXED AXLE



Ø520 mm

MİL BOYU | AXLE LENGTH

300 mm

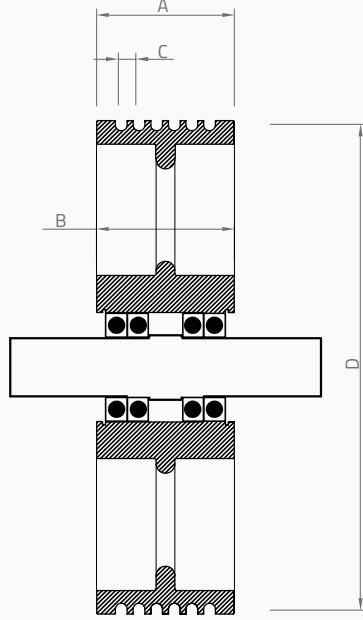
KASNAK ÇAP NOMINAL DIAMETER (Ø mm)	KANAL SAYISI NUMBER OF GROOVES	HALAT ÇAP ROPE DIAMETER (Ø mm)	HALAT MERKEZİ DISTANCE BETWEEN ROPES (mm)	GENİŞLİK CROWN WIDTH (mm)	GÖBEK GENİŞLİK HUB WIDTH (mm)	GÖBEK DIŞ ÇAP HUB OUTSIDE DIAMETER (Ø mm)	RULMAN BALL BEARING	MİL ÇAP AXLE DIAMETER (Ø mm)	STATİK YÜK STATIC LOAD (kg)	ÜRÜN KODU PRODUCT CODE	AĞIRLIK WEIGHT (INCLUDE PILLOW BLOCKS) (kg)
D			C	A	B	E					
520	4	8	13	110	110	160	4x6211 ZZ	55	1480	KP524-8	30
520	5	8	13	110	110	160	4x6211 ZZ	55	1900	KP525-8	30
520	6	8	13	110	110	160	4x6211 ZZ	55	1900	KP526-8	30
520	7	8	13	130	130	160	4x6211 ZZ	55	1900	KP527-8	31
520	8	8	13	130	130	160	4x6211 ZZ	55	1900	KP528-8	31
520	4	10	17	110	110	160	4x6211 ZZ	55	1900	KP524-10	30
520	5	10	17	110	110	160	4x6211 ZZ	55	1900	KP525-10	30
520	6	10	17	130	130	160	4x6211 ZZ	55	1900	KP526-10	31
520	4	12	19	110	110	160	4x6211 ZZ	55	1900	KP524-12	30
520	5	12	19	110	110	160	4x6211 ZZ	55	1900	KP525-12	30
520	6	12	19	130	130	160	4x6211 ZZ	55	1900	KP526-12	31
520	4	13	20	110	110	160	4x6211 ZZ	55	1900	KP524-13	30
520	5	13	20	130	130	160	4x6211 ZZ	55	1900	KP525-13	31
520	6	13	20	130	130	160	4x6211 ZZ	55	1900	KP526-13	31

KP SERİSİ
KP SERIES

KP SERİSİ KP SERIES

1:1 - 1:2 - 1:4 ASKI
1:1 - 1:2 - 1:4 ROPING

SABİT MİL FIXED AXLE



Ø560 mm

MİL BOYU | AXLE LENGTH

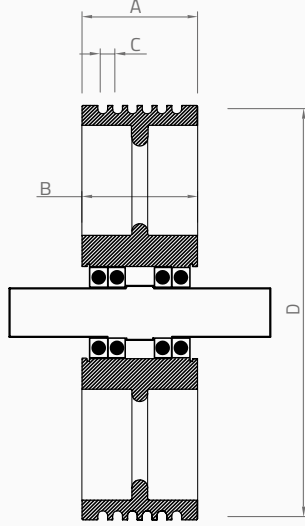
350 mm

KASNAK ÇAPI NOMINAL DIAMETER (Ø mm)	KANAL SAYISI NUMBER OF GROOVES	HALAT ÇAPI ROPE DIAMETER (Ø mm)	HALAT MERKEZİ DISTANCE BETWEEN ROPES (mm)	GENİSLİK CROWN WIDTH (mm)	GÖBEK GENİSLİK HUB WIDTH (mm)	GÖBEK DIŞ ÇAP HUB OUTSIDE DIAMETER (Ø mm)	RULMAN BALL BEARING	MİL ÇAPI AXLE DIAMETER (Ø mm)	STATİK YÜK STATIC LOAD (kg)	ÜRÜN KODU PRODUCT CODE	AĞIRLIK WEIGHT (INCLUDE PILLOW BLOCKS) (kg)
D			C	A	B	E					
560	4	10	17	170	170	160	4x6211 ZZ	55	1900	KP564-10	34
560	5	10	17	170	170	160	4x6211 ZZ	55	1900	KP565-10	34
560	6	10	17	170	170	160	4x6211 ZZ	55	1900	KP566-10	34
560	7	10	17	170	170	160	4x6211 ZZ	55	1900	KP567-10	34
560	8	10	17	170	170	160	4x6211 ZZ	55	1900	KP568-10	34
560	9	10	17	170	170	160	4x6211 ZZ	55	1900	KP569-10	34
560	4	12	19	170	170	160	4x6211 ZZ	55	1900	KP564-12	34
560	5	12	19	170	170	160	4x6211 ZZ	55	1900	KP565-12	34
560	6	12	19	170	170	160	4x6211 ZZ	55	1900	KP566-12	34
560	7	12	19	170	170	160	4x6211 ZZ	55	1900	KP567-12	34
560	8	12	19	170	170	160	4x6211 ZZ	55	1900	KP568-12	34
560	4	13	20	170	170	160	4x6211 ZZ	55	2400	KP564-13	34
560	5	13	20	170	170	160	4x6211 ZZ	55	2400	KP565-13	34
560	6	13	20	170	170	160	4x6211 ZZ	55	2400	KP566-13	34
560	7	13	20	170	170	160	4x6211 ZZ	55	2400	KP567-13	34
560	4	14	21	170	170	160	4x6211 ZZ	55	2400	KP564-14	34
560	5	14	21	170	170	160	4x6211 ZZ	55	2400	KP565-14	34
560	6	14	21	170	170	160	4x6211 ZZ	55	2400	KP566-14	34
560	7	14	21	170	170	160	4x6211 ZZ	55	2400	KP567-14	34

KP SERİSİ KP SERIES

1:1 - 1:2 - 1:4 ASKI
1:1 - 1:2 - 1:4 ROPING

SABİT MİL FIXED AXLE



Ø640 mm

MİL BOYU | AXLE LENGTH

350 mm

KASNAK ÇAPI NOMINAL DIAMETER (Ø mm)	KANAL SAYISI NUMBER OF GROOVES	HALAT ÇAPI ROPE DIAMETER (Ø mm)	HALAT MERKEZİ DISTANCE BETWEEN ROPES (mm)	GENİŞLİK CROWN WIDTH (mm)	GÖBEK GENİŞLİK HUB WIDTH (mm)	GÖBEK DIŞ ÇAP HUB OUTSIDE DIAMETER (Ø mm)	RULMAN BALL BEARING	MİL ÇAPI AXLE DIAMETER (Ø mm)	STATİK YÜK STATIC LOAD (kg)	ÜRÜN KODU PRODUCT CODE	AĞIRLIK WEIGHT (INCLUDE PILLOW BLOCKS) (kg)
D			C	A	B	E					
640	4	10	17	170	170	180	4x6211 ZZ	55	1900	KP644-10	50
640	5	10	17	170	170	180	4x6211 ZZ	55	1900	KP645-10	50
640	6	10	17	170	170	180	4x6211 ZZ	55	1900	KP646-10	50
640	7	10	17	170	170	180	4x6211 ZZ	55	1900	KP647-10	50
640	8	10	17	170	170	180	4x6211 ZZ	55	1900	KP648-10	50
640	9	10	17	170	170	180	4x6211 ZZ	55	1900	KP649-10	50
640	4	12	19	170	170	180	4x6211 ZZ	55	1900	KP644-12	50
640	5	12	19	170	170	180	4x6211 ZZ	55	1900	KP645v-12	50
640	6	12	19	170	170	180	4x6211 ZZ	55	1900	KP646-12	50
640	7	12	19	170	170	180	4x6211 ZZ	55	1900	KP647-12	50
640	8	12	19	170	170	180	4x6211 ZZ	55	1900	KP648-12	50
640	4	13	20	170	170	180	4x6211 ZZ	55	2400	KP564-13	50
640	5	13	20	170	170	180	4x6211 ZZ	55	2400	KP565-13	50
640	6	13	20	170	170	180	4x6211 ZZ	55	2400	KP566-13	50
640	7	13	20	170	170	180	4x6211 ZZ	55	2400	KP567-13	50
640	4	14	21	170	170	180	4x6211 ZZ	55	2400	KP564-14	50
640	5	14	21	170	170	180	4x6211 ZZ	55	2400	KP565-14	50
640	6	14	21	170	170	180	4x6211 ZZ	55	2400	KP566-14	50
640	7	14	21	170	170	180	4x6211 ZZ	55	2400	KP567-14	50
640	4	15	22	170	170	180	4x6211 ZZ	55	2400	KP564-14	50
640	5	15	22	170	170	180	4x6211 ZZ	55	2400	KP565-14	50
640	6	15	22	170	170	180	4x6211 ZZ	55	2400	KP566-14	50
640	7	15	22	170	170	180	4x6211 ZZ	55	2400	KP567-14	50
640	4	16	23	170	170	180	4x6211 ZZ	55	2400	KP644-16	50
640	5	16	23	170	170	180	4x6211 ZZ	55	2400	KP645-16	50
640	6	16	23	170	170	180	4x6211 ZZ	55	2400	KP646-16	50