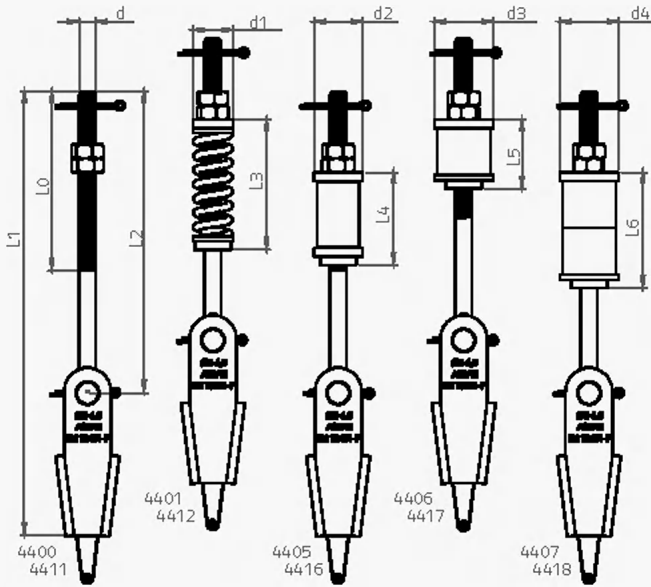
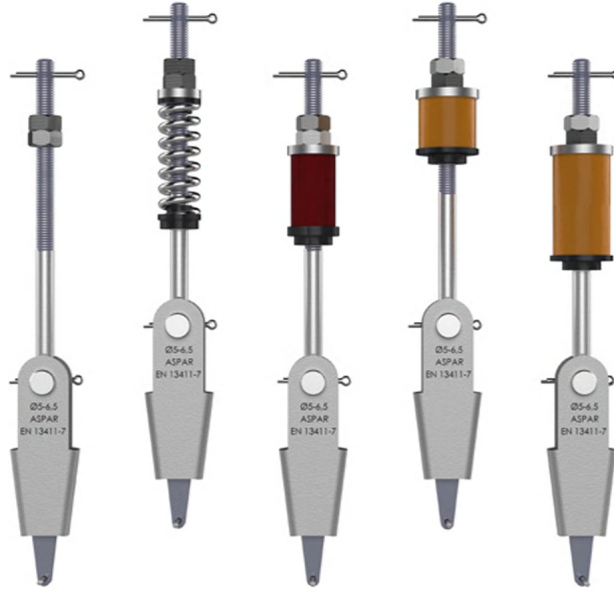


# Ø5-6,5 mm HALAT ŞİŞESİ | ROPE ATTACHMENT

EN13411-7



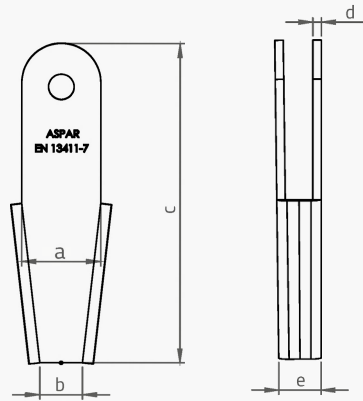
TÜM METAL YÜZEYLER GALVANİZ KAPLANMIŞTIR  
ALL SURFACE ARE GALVANIZED

TÜM HALAT ŞİŞELERİ HALAT KOPMA YÜKÜ (32 kN)  
TESTLERİNDEN BAŞARI İLE GEÇMİŞTİR  
ALL THE ROPE ATTACHMENTS PASSED THE ROPE BREAKING FORCE  
(32 kN) TESTS SUCCESSFULLY.

KOD CODE	L0	L1	L2	L3	L4	L5	L6	d	d1	d2	d3	d4
4400	110	265	180					M10				
4401	110	265	180	78				M10	24			
4405	110	265	180		55			M10		29		
4406	110	265	180			41		M10			35	
4407	110	265	180				69	M10				35
4411	290	445	360					M10				
4412	290	445	360	78				M10	24			
4416	290	445	360		55			M10		29		
4417	290	445	360			41		M10			35	
4418	290	445	360				69	M10				35

EN13411-7

Ø5-6,5 mm  
GÖVDE | BODY

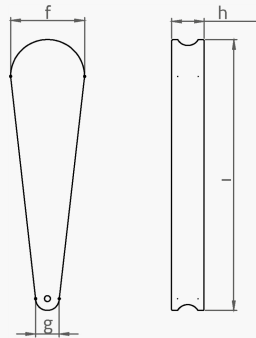


MALZEME | MATERIAL  
SAC GÖVDE | SHEETIRON

a	b	c	d	e
28	16	100	4	17

EN13411-7

Ø5-6,5 mm  
KAMA | WEDGE

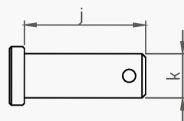


MALZEME | MATERIAL  
PIK DÖKÜM | CASTIRON  
EN-GJMW-400-5  
EN-GJL-200

f	g	h	i
18	7	8	58

EN13411-7

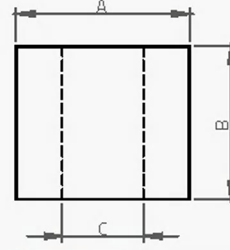
Ø5-6,5 mm  
PİM | PIN



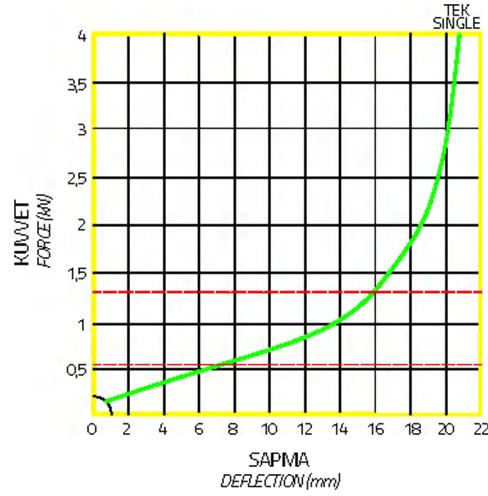
MALZEME | MATERIAL  
METAL | ROUND METAL BAR  
10083 - 1 C 35 E

j	k
28	Ø10

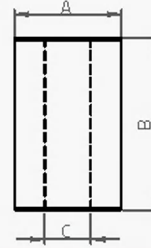
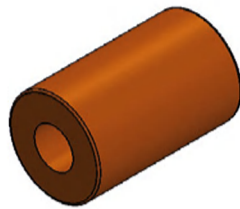
**Ø5-6,5 mm**  
**POLIÜRETAN LASTİK | POLYURETHANE CABLE BUFFER**



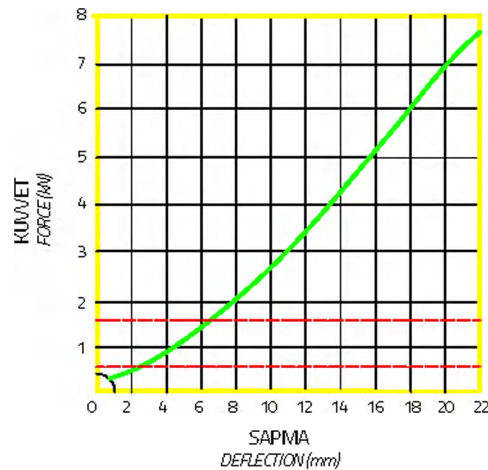
TİP   TYPE	A	B	C
L5 - L6	32	28	15



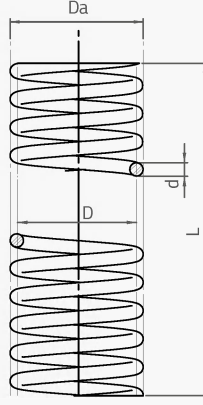
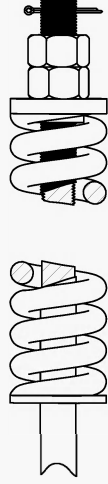
**Ø5-6,5 mm**  
**PVC LASTİK | PVC CABLE BUFFER**



TİP   TYPE	A	B	C
L4	25	40	11



Ø5-6,5 mm  
YAY | SPRING



MALZEME | MATERIAL  
DIN 17223 B - EN 10270B

DIŞ ÇAP OUTER DIAMETER	MERKEZ ÇAPI MID THREAD DIAMETER	TEL ÇAPI DIAMETER SPRING WIRE	BOY UNSTRESSED LENGHT	KUVVET ELESTIC FORCE	STROK RANGE OF SPRING	YAY SABİTİ SPRING RATE CONSTANT
mm	mm	mm	mm	N	mm	N/mm
Da	D	d	L	F	L1	k
23,5	19	5	61,5	1570	16,75	93,80

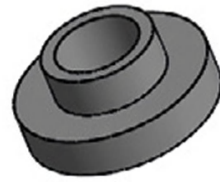
**KOLİ BİLGİLERİ | PACKING MEASURE**

ÜRÜN ADI PRODUCT DESCRIPTION	KOLİDEKİ ADET QUANTITY IN PACKAGE	EN WIDTH	BOY LENGTH	YÜKSEKLİK HEIGHT	AĞIRLIK WEIGHT
Ø5-6,5 HALAT ŞİŞESİ Ø5-6,5 ROPE ATTACHMENT	20	21 cm	50 cm	14 cm	16 kg

**Ø5-6,5 mm  
4401 | 4412**



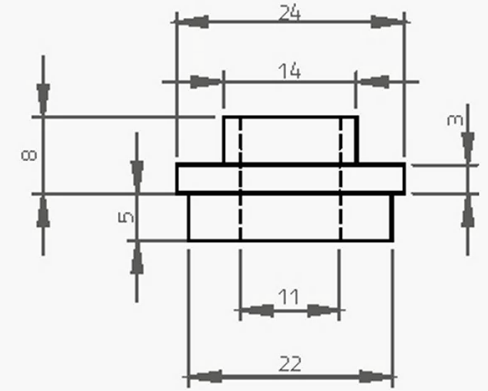
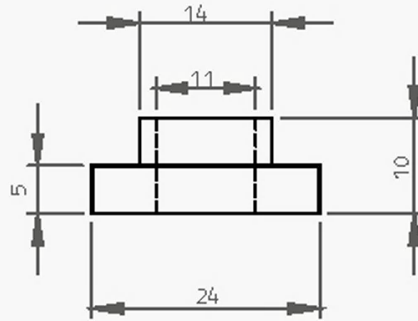
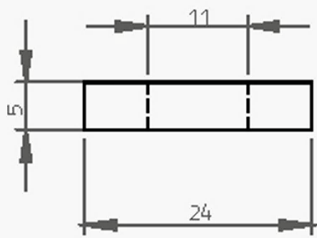
METAL  
SHEET IRON



POLYAMİD  
POLYAMIDE



POLYAMİD  
POLYAMIDE



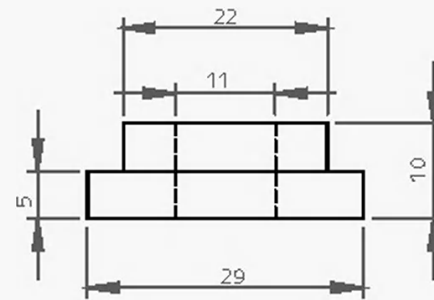
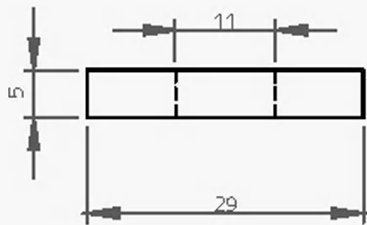
**Ø5-6,5 mm  
4405 | 4416**



METAL  
SHEET IRON



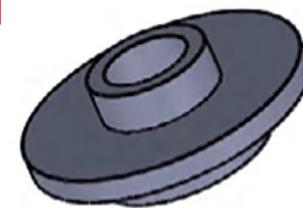
POLYAMİD  
POLYAMIDE



**Ø5-6,5 mm  
4406 | 4407 | 4416 | 4418**



METAL  
SHEET IRON



POLYAMİD  
POLYAMIDE

