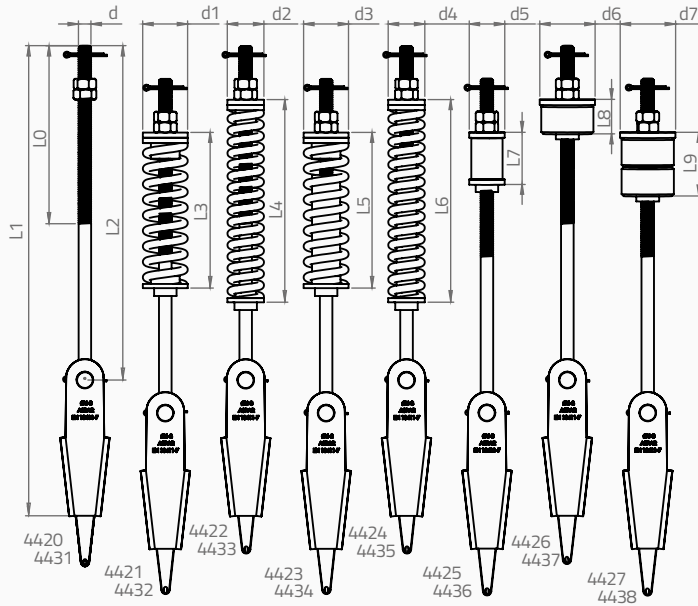
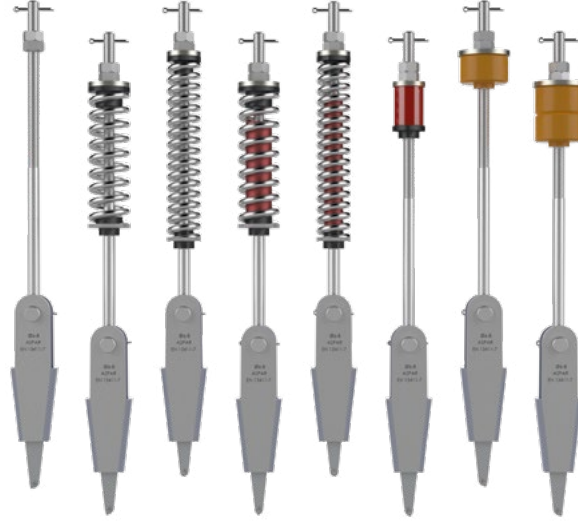


Ø6-8 mm HALAT ŞİŞESİ | ROPE ATTACHMENT

EN13411-7



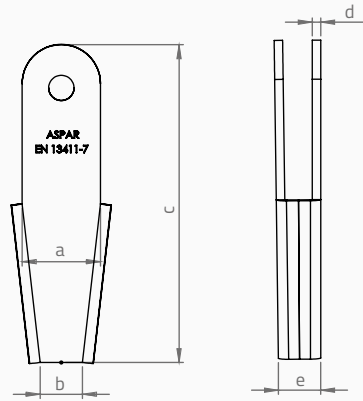
TÜM METAL YÜZEYLER GALVANİZ KAPLANMIŞTIR
ALL SURFACE ARE GALVANIZED

TÜM HALAT ŞİŞELERİ HALAT KOPMA YÜKÜ (43,9 kN)
TESTLERİNDEN BAŞARI İLE GEÇMİŞTİR
ALL THE ROPE ATTACHMENTS PASSED THE ROPE BREAKING FORCE
(43,9 kN) TESTS SUCCESSFULLY.

KOD/CODE	L0	L1	L2	L3	L4	L5	L6	L7	L8	L9	d	d1	d2	d3	d4	d5	d6	d7
4420	170	450	320								M12							
4421	170	450	320	149							M12	43						
4422	170	450	320		194						M12		35					
4423	170	450	320			149					M12			43				
4424	170	450	320				194				M12				35			
4425	170	450	320					50			M12					34		
4426	170	450	320						33		M12						53	
4427	170	450	320							61	M12							53
4431	450	730	600								M12							
4432	450	730	600	149							M12	43						
4433	450	730	600		194						M12		35					
4434	450	730	600			149					M12			43				
4435	450	730	600				194				M12				35			
4436	450	730	600					50			M12					34		
4437	450	730	600						33		M12						53	
4438	450	730	600							61	M12							53

EN13411-7

Ø6-8 mm
GÖVDE | BODY

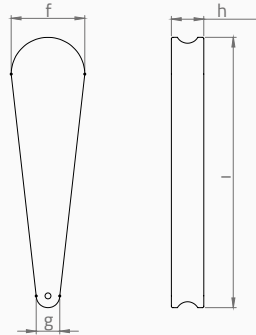


MALZEME | MATERIAL
SAC GÖVDE | SHEETIRON

a	b	c	d	e
37	20	150	4	20

EN13411-7

Ø6-8 mm
KAMA | WEDGE

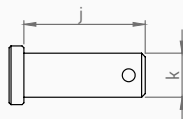


MALZEME | MATERIAL
PIK DÖKÜM | CASTIRON
EN-GJMW-400-5
EN-GJL-200

f	g	h	i
25	8	11	92

EN13411-7

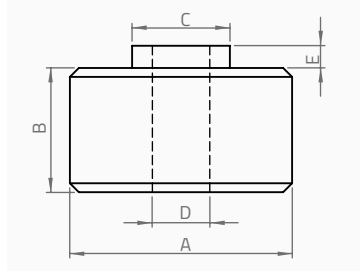
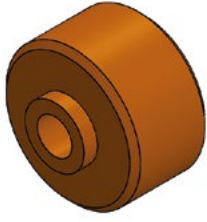
Ø6-8 mm
PİM | PIN



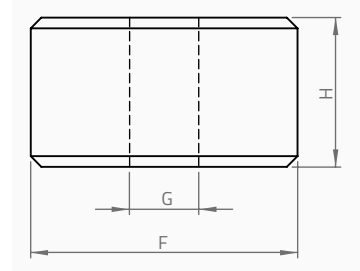
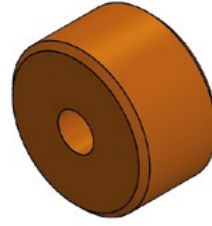
MALZEME | MATERIAL
METAL | ROUND METAL BAR
10083 - 1 C 35 E

j	k
33	Ø12

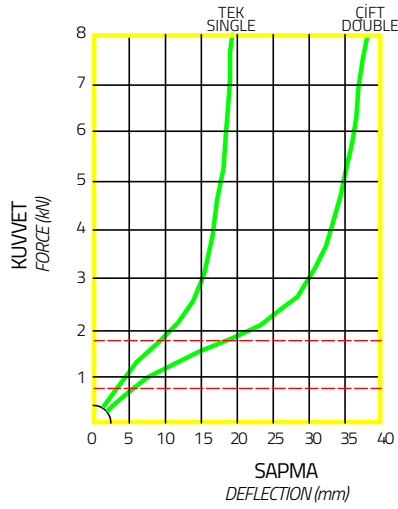
Ø6-8 mm
POLIÜRETAN LASTİK | POLYURETHANE CABLE BUFFER



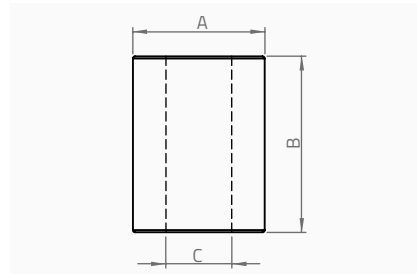
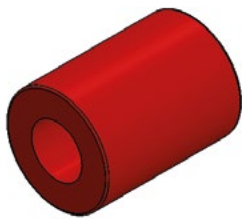
TİP TYPE	A	B	C	D	E
L8 - L9	50	28	22	13	5



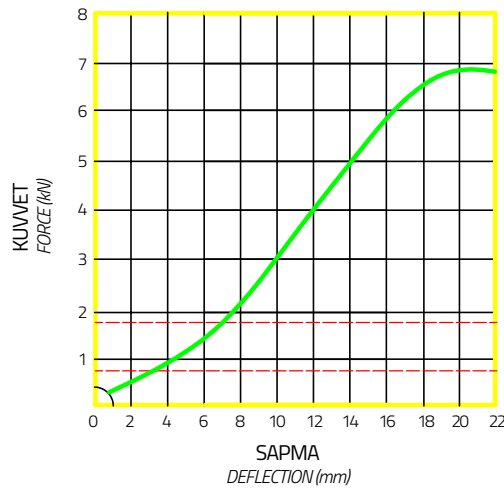
TİP TYPE	F	G	H
L8	50	13	28



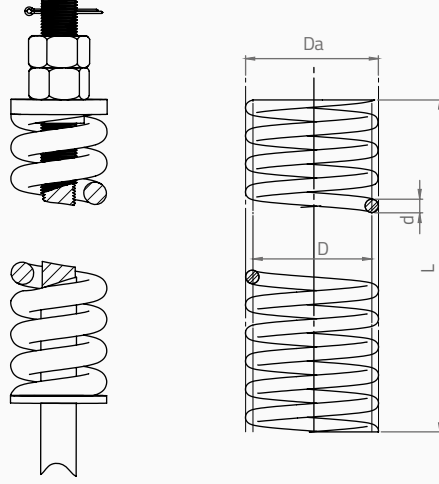
Ø6-8 mm
PVC LASTİK | PVC CABLE BUFFER



TİP TYPE	A	B	C
L7	30	40	15



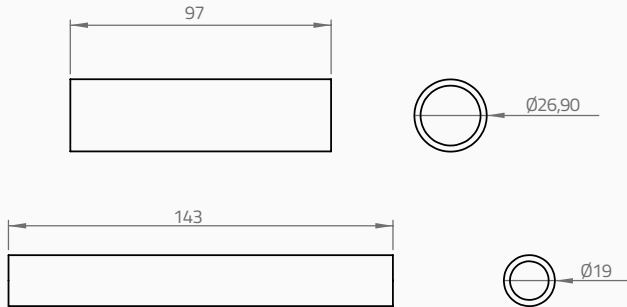
Ø6-8 mm YAY | SPRING



MALZEME | MATERIAL
DIN 17223 B - EN 10270B

TİP TYPE	DIŞ ÇAP OUTER DIAMETER	MERKEZ ÇAPI MID THREAD DIAMETER	TEL ÇAPI DIAMETER SPRING WIRE	BOY UNSTRESSED LENGHT	KUVVET ELESTIC FORCE	STROK RANGE OF SPRING	YAY SABİTİ SPRING RATE CONSTANT
	mm	mm	mm	mm	N	mm	N/mm
	Da	D	d	L	F	L1	k
L3 - L5	43	35	7,5	135	2618	30	86,8
L4 - L6	35	28	7,5	180	2625	28	91,56

Ø6-8 mm YAY BORUSU | SPRING STOPPER



MALZEME | MATERIAL
METAL | METAL

KOLİ BİLGİLERİ | PACKING MEASURE

ÜRÜN ADI PRODUCT DESCRIPTION	KOLİDEKİ ADET QUANTITY IN PACKAGE (pcs)	EN WIDTH (cm)	BOY LENGTH (cm)	YÜKSEKLİK HEIGHT (cm)	AĞIRLIK WEIGHT (kg)
Ø6-8 HALAT ŞİŞESİ Ø6-8 ROPE ATTACHMENT	20	21	50	14	14

Ø6-8 mm
4421 | 4423 | 4432 | 4434



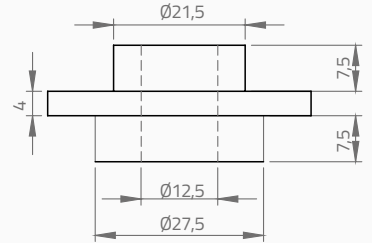
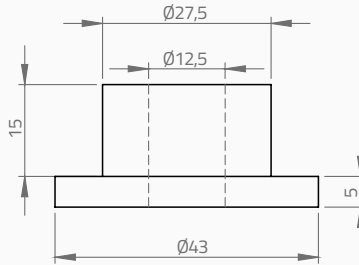
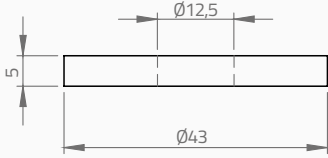
METAL
SHEET IRON



POLYAMİD
POLYAMIDE



KAUÇUK
RUBBER



Ø6-8 mm
4422 | 4424 | 4433 | 4435



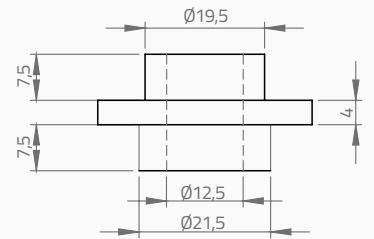
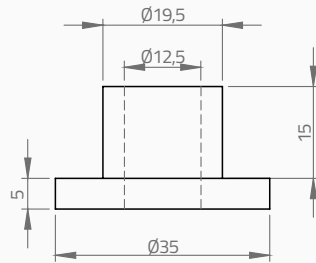
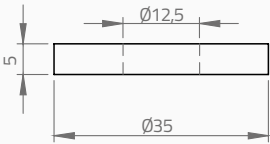
METAL
SHEET IRON



POLYAMİD
POLYAMIDE



KAUÇUK
RUBBER



Ø6-8 mm
4425 | 4436



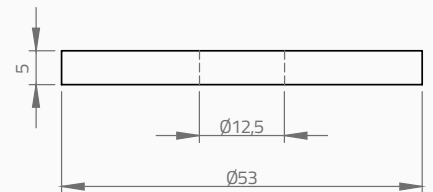
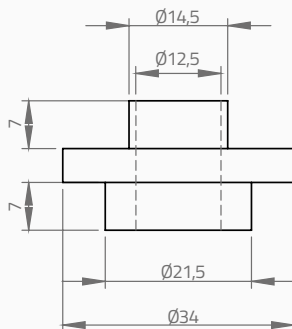
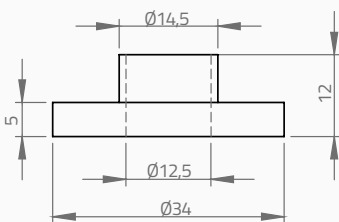
METAL
SHEET IRON



POLYAMİD
POLYAMIDE



METAL
SHEET IRON



Ø6-8 mm
4426 | 4427 | 4437 | 4438